

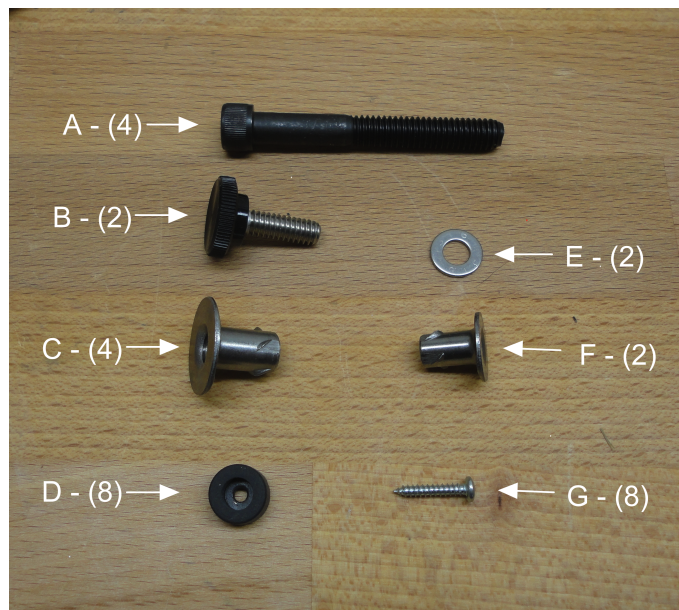
Studio - Board Mount Kit

Mounting the Studio glass cutter on a plywood base

Important: The location of the holes must be accurate. The drawing for hole locations is included on the last page of this document. If you do not have the ability to drill the holes in the required location, a cabinet shop can use a CNC router to make you an accurate base.



The mounting kit allows you to mount the Studio glass cutter on a plywood base so it can be moved when you are not using it.



Hardware included in the mounting kit

A - 5/16 socket head cap screw

- B - 1/4" Thumb Screw
- C - 5/16 T-Nut
- D - Rubber Foot
- E - 1/4" Washer
- F - 1/4" T-Nut
- G - Machine screw

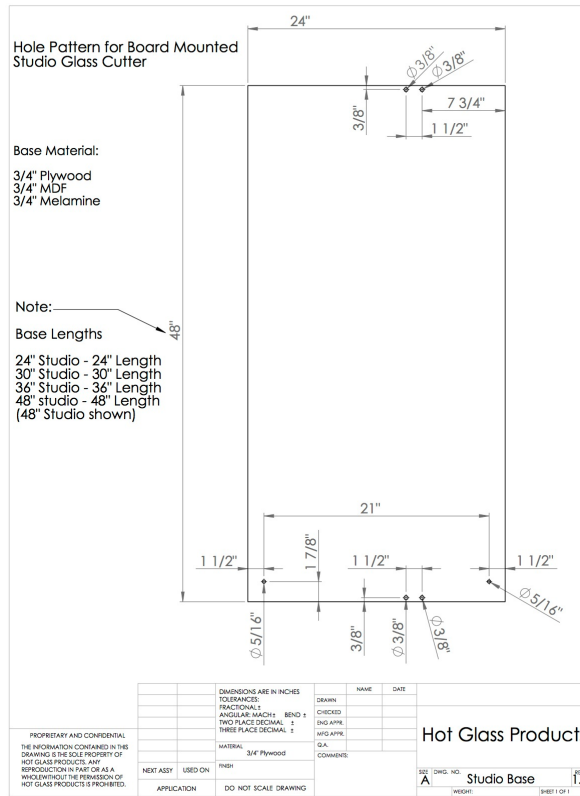
Selecting a Base

We recommend a good quality 3/4" plywood. You can substitute MDF, or Melamine particle board 3/4" in thickness if you desire. The recommended base size is as follows:

- 48" Studio glass cutter - 24" x 48"
- 36" Studio glass cutter - 24" x 36"
- 30" Studio glass cutter - 24" x 30"
- 24" Studio glass cutter - 24" x 24"

Tools Needed

- 3/8" Brad point drill
- 5/16" Brad point drill
- Drill
- Ruler
- T-Square
- Hammer
- Phillips Screwdriver
- 1/4" Hex wrench (included with Studio kit)



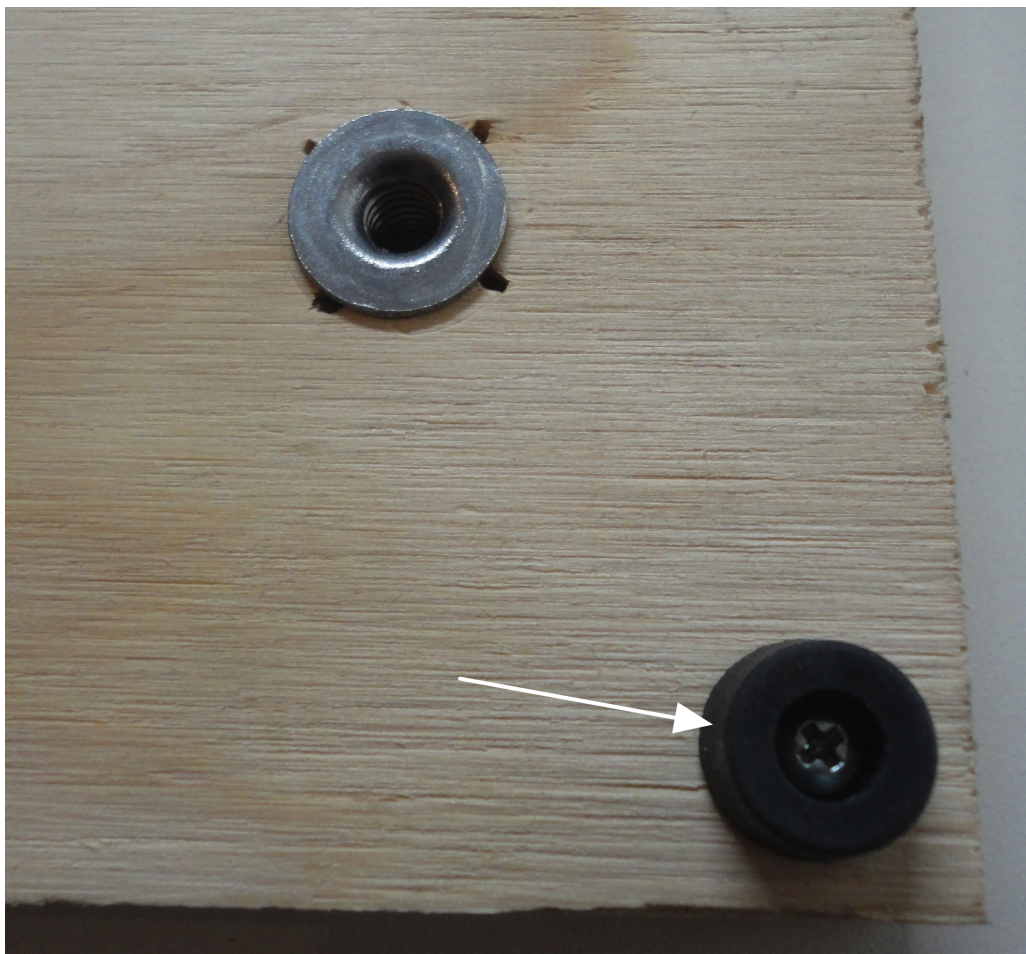
Use the included drawing to layout the required holes. The location of the holes must be accurate. If you do not have the ability to drill the holes in the required location, a cabinet shop can use a CNC router to make you a accurate base to mount your Studio glass cutter.



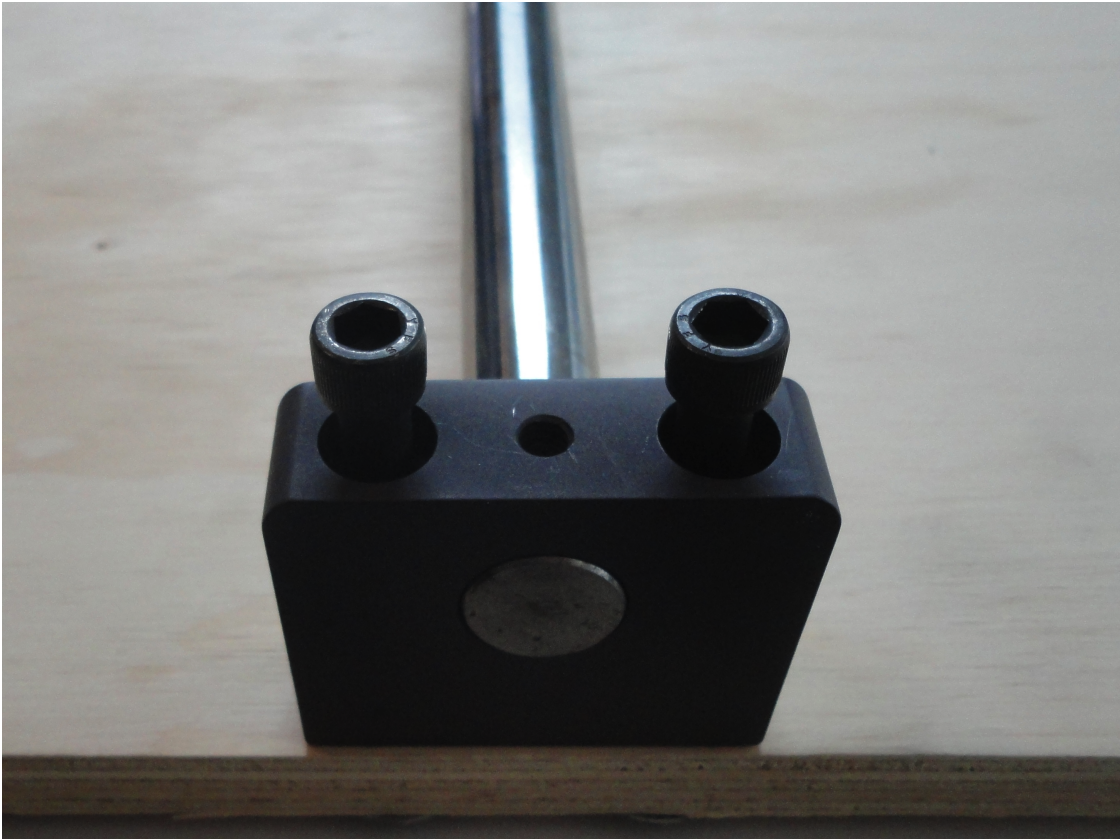
Insert the T-Nuts (C) and (F) in the holes on the bottom of the base.



Lightly tap them in with a hammer



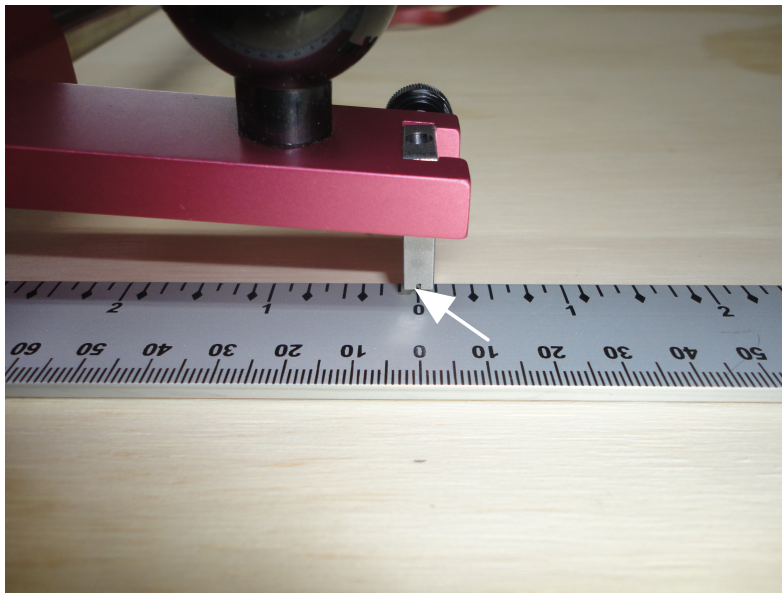
Screw the (D) feet into the bottom using screw (G). one in each corner, and divide the other 4 evenly along the long edge of the base.



insert the bolts into the Studio supports and tighten until snug. Do not over tighten.



Put washer (E) on Thumbscrew (B) screw through ruler slots. Leave thumbscrews loose.



Align cutter wheel with center of ruler and tighten thumbscrews on ruler. You are now ready to start using your Studio glass cutter. If you have questions, please email us at info@hotglassproducts.com.

Hole Pattern for Board Mounted Studio Glass Cutter

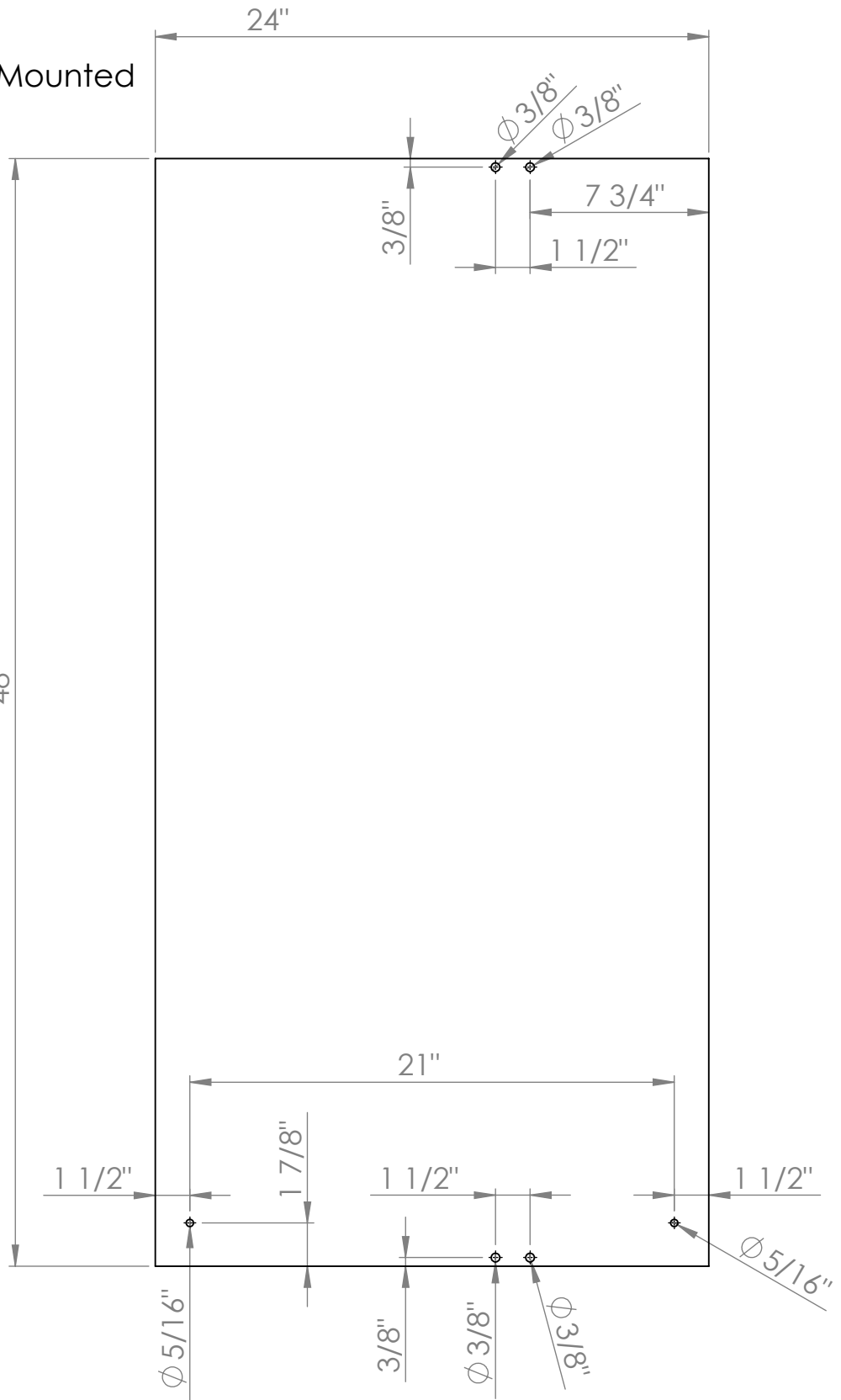
Base Material:

- 3/4" Plywood
- 3/4" MDF
- 3/4" Melamine

Note:

Base Lengths

- 24" Studio - 24" Length
- 30" Studio - 30" Length
- 36" Studio - 36" Length
- 48" studio - 48" Length
- (48" Studio shown)



PROPRIETARY AND CONFIDENTIAL
 THE INFORMATION CONTAINED IN THIS DRAWING IS THE SOLE PROPERTY OF HOT GLASS PRODUCTS. ANY REPRODUCTION IN PART OR AS A WHOLE WITHOUT THE PERMISSION OF HOT GLASS PRODUCTS IS PROHIBITED.

		DIMENSIONS ARE IN INCHES TOLERANCES: FRACTIONAL ± ANGULAR: MACH ± BEND ± TWO PLACE DECIMAL ± THREE PLACE DECIMAL ±		NAME	DATE
		MATERIAL 3/4" Plywood		DRAWN	
		FINISH		CHECKED	
NEXT ASSY	USED ON			ENG APPR.	
APPLICATION		DO NOT SCALE DRAWING		MFG APPR.	
				Q.A.	
				COMMENTS:	

Hot Glass Products

SIZE A	DWG. NO. Studio Base	REV. 1.0
WEIGHT:		SHEET 1 OF 1